



Professional label printer range

- Print in black and red* to highlight important information
- Wide range of connectivity options
- PC, Mac, iOS and Android compatibility
- High speed printing of up to 110 labels per minute
- Use continuous rolls and cutter to print labels up to one metre in length
- Stand-alone printing function where no PC required – ideal for food and retail applications (QL-820NWB only)





Versatile labelling options

Boasting the highest print speeds and the most connectivity options in their class, the QL-800 series label printers are the ideal solution for many types of business.

Print black and red* text without ink

Draw attention to important information by including red as well as black on your labels - ideal for highlighting use-by dates, allergens and other critical information.



Wide range of connectivity options

All models allow easy connection to desktop computers using USB. Additionally the QL-810W incorporates Wi-Fi, while the flagship QL-820NWB also adds Ethernet and Bluetooth connectivity.

Create labels the size you need

Labels are available in a range of traditional die-cut (pre-sized), or continuous rolls that lets the built-in cutter trim your label to the precise length needed (up to one metre).



Print from desktop and mobile devices, or stand-alone

All models are PC/Mac compatible, whereby the QL-810W and QL-820NWB connect to smartphones and tablets using the built-in wireless connections. Additionally you can select and then print labels stored in the memory of the QL-820NWB using the large LCD display and integrated control panel.

* Requires DK-22251 continuous roll to print in black and red

The QL-800 series professional label printers offer unrivalled versatility not only in the office, but also retail, food, postal, facilities management and other industries.

Create labels with black and red* print up to one metre in length, from PC, Mac, iOS** or Android** devices. Several wired and wireless connectivity options are available, and even the ability to directly print labels stored in the printer's memory using the integrated LCD/control panel on the QL-820NWB, or external devices connected to the printer.

For developers and systems integrators looking to incorporate label printing as part of their solutions, software development kits for Windows, iOS and Android offer an easy way to add support for the Brother QL-800 series label printers.



Summary of features



QL-800



QL-810W



QL-820NWB

	QL-800	QL-810W	QL-820NWB
Fast print speed – number of labels per minute	93	110	110
Print labels with both black and red* print	•	•	•
Advanced label design software for PC/Mac (P-touch Editor)	•	•	•
Built-in label design software for PC/Mac that requires no software or driver installation (P-touch Editor Lite)	•	•	
USB	•	•	•
Wi-Fi with AirPrint		•	•
Wired Ethernet			•
Bluetooth for easy connection to iOS/Android devices			•
Stand-alone printing of labels stored in printer memory			•
Optional li-ion battery for printing away from power sources		•	•
Software Development Kits available for Microsoft Windows***, iOS and Android devices to add label printing to your own solutions		•	•

* Requires DK-22251 continuous roll to print in black and red

** Red print capability from iPrint&Label app available from May 2017

*** QL-800 only supports Microsoft Windows SDK

Advanced functionality

The QL-820NWB with its stand-alone print function and remote FTP template update allows label printing directly from the control panel. Plus advanced connectivity options offer the widest compatibility with all types of devices.

Stand-alone label printing

The QL-820NWB has a large memory to store label templates designed in P-touch Editor. Label templates can be uploaded to the printer's memory, and accessed using the integrated control panel and backlit graphic LCD display. Ideal for printing current or future date/time on labels in the food and retail industries.



Remote template update via FTP

Where the QL-820NWB is deployed at multiple locations, updating the templates in all printers would normally be a time intensive operation. However the printer can automatically connect using FTP to a remote server, and if new templates are found, update these automatically. This helps companies save time and money, and ensures consistent operation at all remote sites. All this directly from the printer via the internet, without needing a PC connection.

AirPrint* and Bluetooth with MFi (Made for iPod/iPhone/iPad) compatibility

The QL-810W and QL-820NWB both support Apple AirPrint* to enable printing from compatible apps on iOS devices and Mac. Additionally, the QL-820NWB offers Bluetooth connectivity to easily connect iOS and Android devices to the printer.



* iOS and macOS only supports black print when using the default AirPrint function, however red print capability is available from iOS devices when using AirPrint with apps developed using the Brother Software Development Kit.

Software solutions

With label design apps for desktop PC's and mobile devices, and SDK's to integrate the QL range into your own applications, you can choose the best option for your label printing needs.

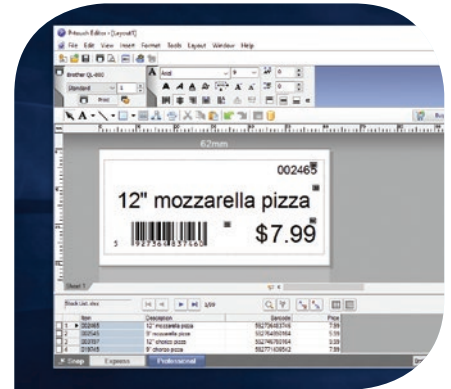


P-touch Editor Lite* / P-touch Editor Lite LAN*

Built inside the QL-800 and QL-810W, this easy to use label design software works without the need to install software or drivers. Working like a USB flash drive, simply connect to your PC/Mac using USB, and launch the software from the drive that appears. Include images, frames and any of your fonts on your label design and print! A version for network connected models is also available - simply run the software to allow many PC's in an office to print labels to the one printer. Again, no installation needed.

P-touch Editor with Microsoft Office add-in

Design professional labels including images and logos, barcodes and frames. Link to data contained in Excel or .csv files, to print many labels quickly and efficiently. The Microsoft Office add-in lets you highlight, click and print right from within Word, Excel or Outlook.

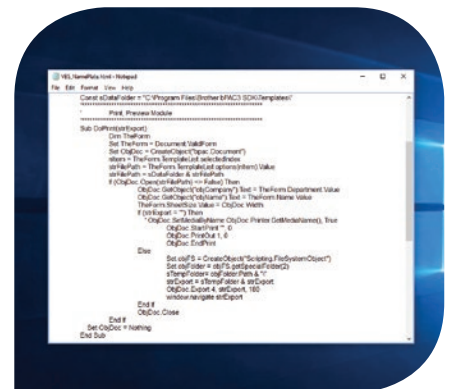


Brother iPrint & Label app** for iOS and Android smartphones/tablets

Print labels on the QL-810W and QL-820NWB using the free iPrint&Label app. Connect via Wi-Fi or Bluetooth (on QL-820NWB), and choose one of the pre-defined templates or quickly design your label from scratch. This free app is available from your mobile device's app store by searching "Brother iPrint&Label".

Software Development Kits for Windows, iOS and Android

System integrators and software developers can now take advantage of various Brother SDK's that allow easy integration of label printing directly within their own apps and software. For more information please visit <http://www.brother.com/product/dev/index.htm>



* Black print capability only. Use P-touch Editor for black and red printing

** Red print capability from iPrint&Label app available from May 2017

Logistics and warehousing

In busy warehouses and post rooms, accurate and timely labelling of parcels, envelopes and product cartons is essential to ensure the smooth running of all logistics operations. Using red* print on handling labels ensures this crucial information is noticed, while barcodes can be quickly generated as-and-when required.

* Requires DK-22251 roll



Handling labels



Temporary signage



Shipping labels

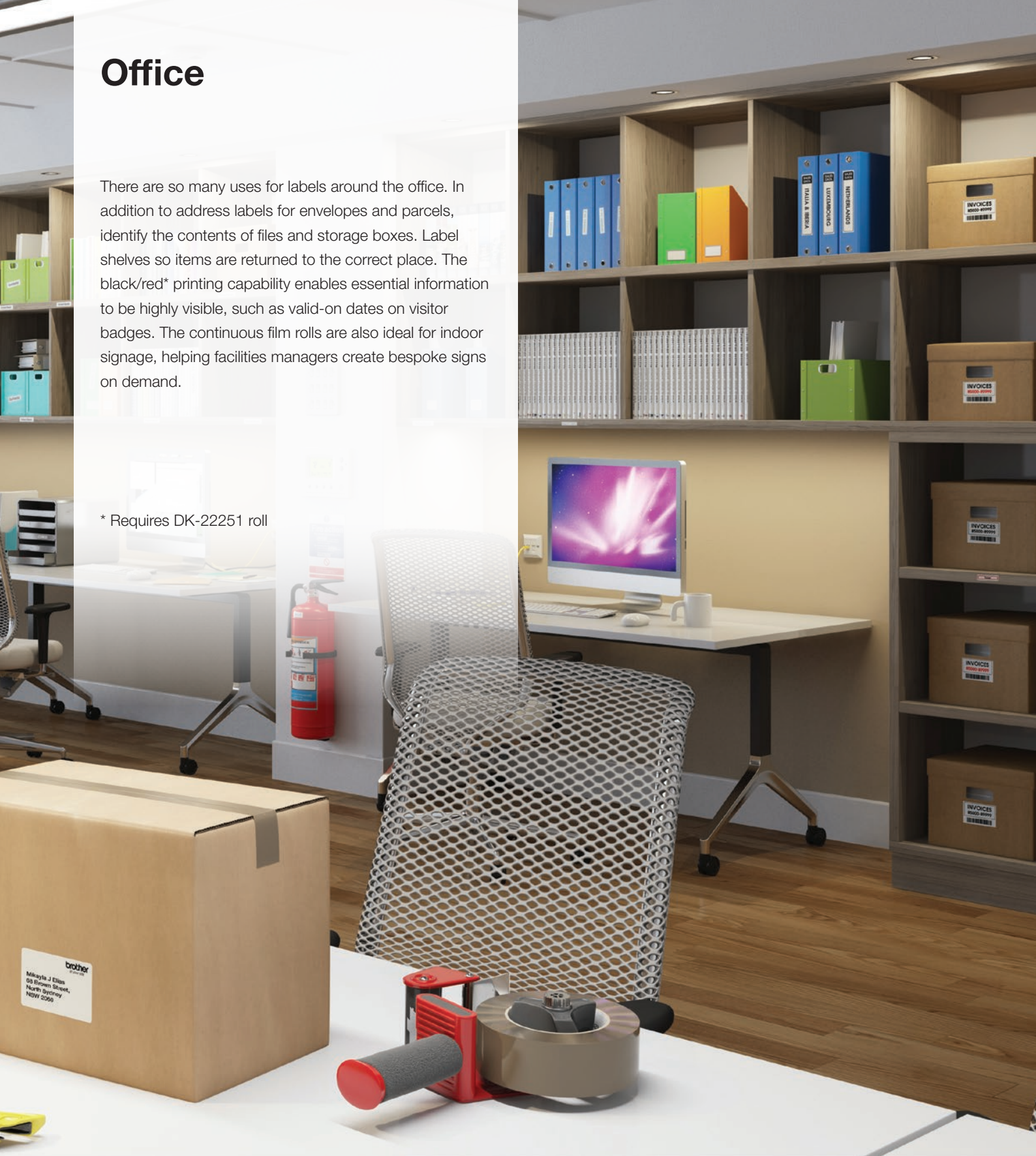


Product packaging

Office

There are so many uses for labels around the office. In addition to address labels for envelopes and parcels, identify the contents of files and storage boxes. Label shelves so items are returned to the correct place. The black/red* printing capability enables essential information to be highly visible, such as valid-on dates on visitor badges. The continuous film rolls are also ideal for indoor signage, helping facilities managers create bespoke signs on demand.

* Requires DK-22251 roll



Visitor badges



Postage labels



Document filing



Indoor signage



DK rolls for the QL-800 label printer range

Wide range of labels available in paper and plastic film material, pre-sized labels or continuous rolls

DK Die-Cut Labels	Material	Colour	Size	Item No.
Standard address label (400/roll)	Paper	White	29 x 90 mm	DK-11201
Large address label (400/roll)	Paper	White	38 x 90 mm	DK-11208
Small address label (800 roll)	Paper	White	29 x 62 mm	DK-11209
Shipping label (300/roll)	Paper	White	62 x 100 mm	DK-11202
File folder label (300/roll)	Paper	White	17 x 87 mm	DK-11203
Multi-purpose label (400/roll)	Paper	White	17 x 54 mm	DK-11204
Square label (1000/roll)	Paper	White	23 x 23 mm	DK-11221
CD/DVD label (100/roll)	Film	White	58 mm	DK-11207
Round label (1200/roll)	Paper	White	12 mm	DK-11219
Round label (1000/roll)	Paper	White	24 mm	DK-11218

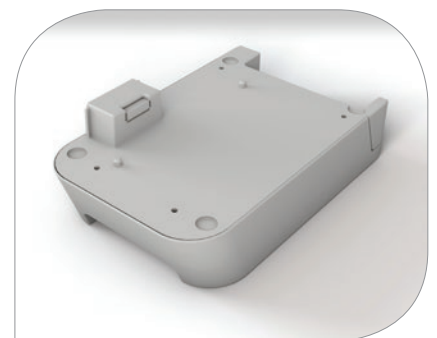
DK Continuous-Length Tapes - 30.48m	Material	Colour	Size	Item No.
Continuous-length	Paper	White	12 mm	DK-22214
Continuous-length	Paper	White	29 mm	DK-22210
Continuous-length	Paper, non-adhesive	White	54 mm	DK-N55224
Continuous-length	Paper	White	62 mm	DK-22205
Continuous-length	Paper, removable	White	62 mm	DK-44205
Continuous-length	Paper, removable	Yellow	62 mm	DK-44605

DK Continuous-Length Tapes - 15.24m	Material	Colour	Size	Item No.
Continuous-length	Film	White	29 mm	DK-22211
Continuous-length	Film	White	62 mm	DK-22212
Continuous-length	Film	Yellow	62 mm	DK-22606
Continuous-length	Film	Clear	62 mm	DK-22113
Continuous-length - Black/Red print	Paper	White	62 mm	DK-22251

Accessories

Optional rechargeable battery unit (PA-BU-001)

This Li-Ion rechargeable battery unit mounts to the base of the QL-810W and QL-820NWB to offer label printing away from power sources. This makes it ideal for use on trollies or carts, or for exhibition badge printing. Features a fast-charge of under 2 hours 30 minutes, and the capability to print up to 4,300 labels (monochrome) or 1,400 labels (colour) per charge*.



* Continuous printing using USB when fully charged

Retail

Conveying product pricing and any special offers to shoppers quickly is crucial for the retail sector. Print pricing labels for product tags, that can also include barcodes. And use red* print on to highlight special offers or promotions by creating eye-catching indoor signage.

* Requires DK-22251 roll



Pricing/Barcode labels



Promotion signage

Food

On-demand label printing is a critical part of the food industry, such as highlighting allergen information to consumers, show use-by/best before dates, and product pricing including barcodes.

The QL-820NWB with its stand-alone label printing function is ideal for counter-top use, and printing labels on-demand. Takeaway outlets can print details of orders, including address information where delivery is required.



Takeaway orders



Shelf-edge labelling

Specifications

QL-800

QL-810W

QL-820NWB

Included items			
In the box	Printer Standard address die-cut labels (100 labels) 2-colour print continuous roll (62mm x 5 metres) USB cable AC power cord Documentation	Printer Standard address die-cut labels (100 labels) 2-colour print continuous roll (62mm x 5 metres) USB cable AC adapter and power cord Documentation	
Software / Firmware			
Operating system support (visit http://support.brother.com for latest downloads and support)	Microsoft® Windows Vista®/ Windows® 7 / Windows® 8 Windows® 8.1 / Windows® 10 macOS X v 10.10 / 10.11 / 10.12 Android 4.1 or higher	Microsoft® Windows Vista®/ Windows® 7 / Windows® 8 Windows® 8.1 / Windows® 10 Windows Server® 2008 / 2008 R2 / Windows® Server 2012 / 2012 R2 macOS X v 10.10 / 10.11 / 10.12 Android 4.1 or higher (SDK) iOS 6, 7, 8, 9, 10 or higher (SDK only) iOS 8, 9, 10 or higher (iPrint & Label)	
SDK availability (visit brother.com.au/service-and-support/software-development-kit.html)	b-PAC (for Windows)	b-PAC (for Windows) Brother Print SDK for Android™ Brother Print SDK for iPhone/iPad (for iOS)	
Supported printer commands	Raster	Raster ESC/P P-touch Template	ZPLII emulation (upon request) ESC/P P-touch Template Raster
Barcode symbologies (using P-touch Editor)	CODE39, CODE128, UCC/EAN128(GS1-128), ITF(I-2/5), CODABAR(NW-7), UPC-A, UPC-E, EAN13, EAN8, ISBN-2(EAN13 AddOn2), ISBN-5(EAN13 AddOn5), Laser Barcode, POSTNET, RSS(RSS14 Standard, RSS14 Truncated, RSS14 Stacked, RSS14 Stacked Omni, RSS Limited, RSS Expanded, RSS Expanded Stacked), PDF417(Standard, Truncate, Micro), QR code(Model1, Model2, Micro), Data Matrix(ECC Square, ECC Rectangular), MaxiCode(Model2, Model3, Model4, Model5) RSS symbols / CODE93 / POSTNET / UPC/EAN EXTENSION / MSI / QR Code (model 1, model 2, micro QR)PDF417 (Standard, Truncate, Micro)PDF417 / Data Matrix(ECC200 Square, ECC200 Rectangular) / MaxiCode / Aztec		
Barcode symbologies (Built-in printer firmware)	-	CODE39, CODE128, UCC/EAN-128(GS1-128), ITF(I-2/5), CODABAR(NW-7), UPC-A, UPC-E, EAN13(JAN13), EAN8, GS1 DataBar(RSS)(GS1 DataBar Omnidirectional, GS1 DataBar Truncated, GS1 DataBar Stacked, GS1 DataBar Stacked Omnidirectional, GS1 DataBar Limited, GS1 DataBar Expanded, GS1 DataBar Expanded Stacked), PDF417(Standard, Truncate, Micro), QR Code(Model 1, Model 2, Micro), Data Matrix (ECC200 Square, ECC200 Rectangular), MaxiCode, CODE93, POSTNET, UPC-E EXTENTION	
Internal fonts	-	Bitmap fonts: Letter Gothic Bold, Helsinki, Brussels, San Diego, Brougham Font sizes: 24, 32, 49 dots Outline fonts: Letter Gothic Bold, Helsinki, Brussels Font sizes: 33-400 dots (22 sizes)	
System Requirements PC / Mac			
Operating System	Windows Vista® / Windows® 7 - 8 - 8.1 - 10 Mac OS X v10.10.x - 10.11.x - 10.12.x Windows Server® 2008 / 2008 R2 / Windows® Server 2012 / 2012 R2		
Interface	Windows®: USB Port (USB Spec. 1.1, 2.0, or 3.0 protocol) Mac: USB Port (USB Spec. 1.1 or 2.0 protocol)	Windows®: USB Port (USB Spec. 1.1, 2.0, or 3.0 protocol) IEEE802.11b/g/n Wireless LAN Mac: USB Port (USB Spec. 1.1 or 2.0 protocol) IEEE802.11b/g/n Wireless LAN	Windows®: USB Port, USB Host (USB Spec. 1.1, 2.0, or 3.0 protocol) IEEE802.11b/g/n Wireless LAN - 10/100 BASE-TX Wired LAN - Bluetooth 2.1 + EDR Mac: USB Port (USB Spec. 1.1 or 2.0 protocol) IEEE802.11b/g/n Wireless LAN - 10/100 BASE-TX Wired LAN - Bluetooth 2.1 + EDR - MFi
Hard Disk Requirements	Windows®: 600MB or more ; Mac: 500MB or more		
Microsoft Office Support	Microsoft® Word / Excel / Outlook: 2007 - 2010 - 2013 - 2016		

Specifications

QL-800

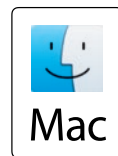
QL-810W

QL-820NB

Printing / Media			
Printing technology	Direct thermal with 2 colour print capability		
Print resolution	300x300dpi (standard) / 300x600dpi (high resolution mode)		
Print speed (single colour)	Maximum 148mm/sec (93 labels/minute)	Maximum 176mm/sec(110 labels/minute)	
Print speed (two colour)	Maximum 24mm/sec (equivalent to 15 labels/minute)		
Label widths	12mm - 62mm		
Maximum print width	58mm		
Maximum print length	1 metre		
Media sensor type	Reflective		
Cutter	Yes (full cut / guillotine type)		
Media types	DK Rolls (DK die-cut labels / DK continuous tape)		
LCD			
Type	-	-	320x120 dot graphic LCD with backlight
Connectivity			
USB	USB version 2.0 full-speed		
USB host capability	-	-	Yes (HID class)
Bluetooth	-		Bluetooth 2.1+EDR
Bluetooth profiles	-		SPP(Serial Port Profile) OPP(Object Push Profile) BIP(Basic Imaging Profile) HCRP(Hard Copy Cable Replacement Profile) iAP profile
iOS and Android compatibility	-	Yes (Wi-Fi)	Yes (Wi-Fi / Wired LAN / Bluetooth)
Wireless LAN	-	IEEE802.11b/g/n	
Wireless LAN security (Infrastructure mode)	-	WEP, WPA-PSK/WPA2-PSK (TKIP/AES), LEAP (CKIP), EAP-FAST (TKIP/AES), PEAP (TKIP/AES), EAP-TTLS (TKIP/AES), EAP-TLS (TKIP/AES)	
AirPrint	-	Yes	
Wired LAN	-	-	10/100 Base-TX
Memory			
Flash (for label templates)	-	6MB	
Locations (for label templates)	-	99	255
Power			
Power	220-240V AC internal power supply	100-240V AC external adapter (auto switching)	
Battery (optional accessory)	-	Li-ion battery including base	
Battery print yield	-	4,300 labels (mono) / 1,400 labels (2 colour)	
Battery charging time	-	Less than 2 hours 30 minutes	
Weights / Dimensions			
Dimensions	125(w) x 213(h) x 142(d) mm	125(w) x 234(h) x 145(d) mm	
Weight	1.15kg	1.12kg	1.16kg

brother

at your side



"Made for iPod," "Made for iPhone," and "Made for iPad" mean that an electronic accessory has been designed to connect specifically to iPod, iPhone, or iPad, respectively, and has been certified by the developer to meet Apple performance standards. Apple is not responsible for the operation of this device or its compliance with safety and regulatory standards. Please note that the use of this accessory with iPod, iPhone, or iPad may affect wireless performance.

iPad, iPhone and iPod are trademarks of Apple Inc., registered in the U.S. and other countries.

The Bluetooth word mark and logos are owned by the Bluetooth SIG, Inc. and any use of such marks by Brother Industries, Ltd. is used under license.

All specifications correct at time of printing. Brother is a registered trademark of Brother Industries Ltd. Brand product names are registered trademarks or trademarks of their respective companies.

www.brother.com.au

Contact:



Brother
Earth



Brother International (Aust) Pty Ltd

Suite 1, Level 3, Building A/11 Talavera Rd, Macquarie Park NSW 2113
Tel: (02) 9887 4344 Website: www.brother.com.au