

# NVRmini 2

Linux Embedded Standalone

Support Megapixel and H.264 cameras



Manage 2 / 4 / 8 / 16 IP Camera



## Key Benefits

### Stability and Reliability

NVRmini 2 is a linux-embedded system that is free from virus attack. With its server-client architecture, NVRmini 2 provides a most stable and high quality monitoring and recording performance. Not only does its software offer a top quality performance, but the hardware enhances stability as well by supporting 4 RAID levels, smart fan, HDD SMART, auto power on, UPS and much more.

### Easy to Use

A top user-friendly system should combine fast and flexible configuration with easy operation. With a few simple steps for installation, the web-based management leads users to configure, monitor and playback video everywhere. UPnP search, auto camera detection and GUI schedule save setting-up time, while the easy drag and drop camera, auto scan, preset point patrolling, and multiple views offer users a prime monitoring experience.

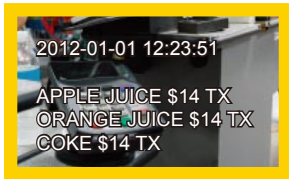
### Value-added Surveillance Features

There are some outstanding features included in the NVRmini 2, one of which is mobile phone client. Users can check their live video wherever they want through iPhone, iPad, Android, BlackBerry. Another feature is Point of Sale (POS). POS data is displayed on live screen of designated channels, and users can fast search POS transaction and related video records. Still another NVRmini 2 feature is the digital watermark on exported video and snapshots, which prevents data from tampered without awareness.

## Key Features

- Support Stream Profile for remote live view bandwidth control
- Support mobile client for iPhone / iPad / Android
- Web-based configuration, live viewer, playback
- Panorama 360° PTZ
- Online GUI recording schedule
- Digital PTZ and multi-view
- Audio recording
- Real-time digital output and Email alert
- Up to 128 CH remote live view
- Playback with 5 intelligent search
- Point of Sale (POS)
- Digital watermark
- Auto port-forwarding
- NTP server synchronization

## Web-Based Liveview



### Point of Sale (POS)

POS text overlay on live view video and recordings. All recorded POS transactions are searchable in the NVRmini 2 database.



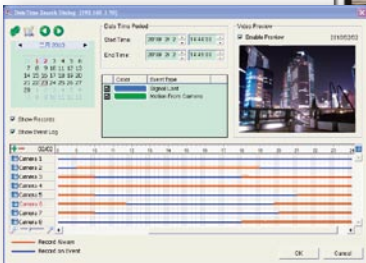
- Web-based management (Recommend on IE 8 and later)
- Up to 128 CH remote live view with multiple monitors
- Easy camera-drag-and-drop on screen
- Camera PTZ integration
- Digital PTZ
- Auto scan
- Multi-view
- Preset point set, go and patrolling
- Joystick support for easier camera controlling
- System event popup
- Camera event on screen display and sound notification



### Multi-View

with duplicating camera on screen and with different digital zoom image.

## Intelligent Playback



- Open record by time, graphic record, event log
- Multi-channel playback
- Playback with 5 intelligent search
- Video enhancement
- POS search
- Support digital watermark on exported video or snapshot
- Evidence export
- Auto backup video to FTP

### Video Enhancement

Fine-tune the image's visibility, sharpness, brightness, contrast or even grey scale.



## 5 Intelligent Search

### General Motion



### Missing Object



### Camera Occlusion



### Foreign Object



### Lose Focus

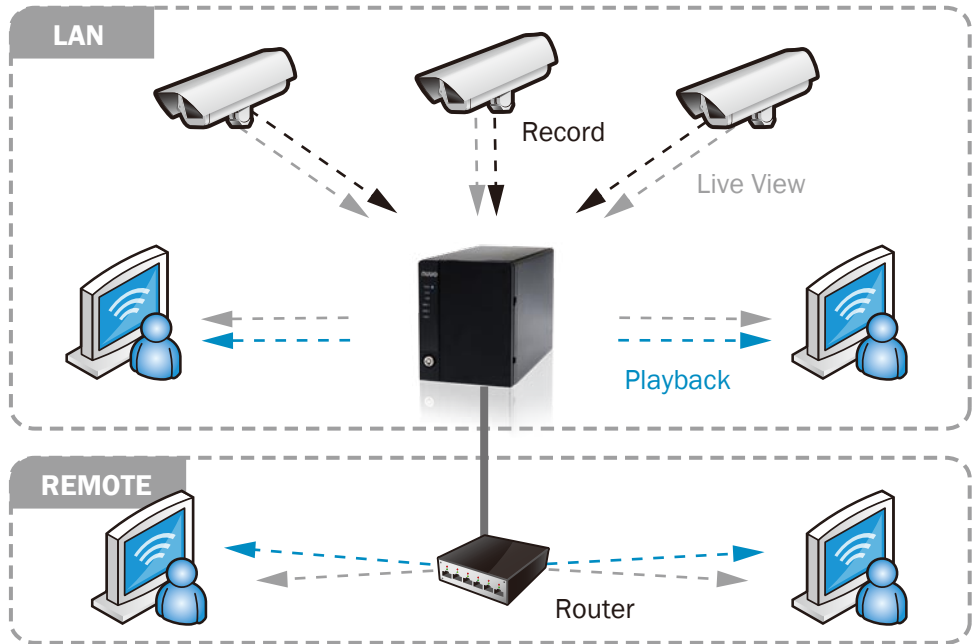


### Multiple Language Support

English, Japanese, Traditional Chinese, Spanish, Deutsch, Finnish, French, Hungarian, Italian, Russian, Czech, Korean, Polish, Dutch, Serbian, Swedish, Portuguese (Brazil)

# Server-Client Architecture

- Linux embedded – free from PC crash and virus attack
- RAID 0,1,5,10, for maximum capacity or data protection
- Support megapixel camera and H.264 compression format
- Remote I/O solution and camera I/O integration
- Four kinds of user authorities: administrator, power user, user, and guest
- E-map with indicator
- Alarm source of NUUO Central Management System



### Linux-Embedded

Embedded Linux for high stability and free from virus attack



### Dual Streams

Dual stream for managing bandwidth



### Panorama 360° PTZ

(ImmerVision and VIVOTEK fisheye) PanoramaPTZ function can reduce the total cost by decreasing the number of IP cameras. Not only the original view, NVRmini 2 also supports PTZ, quad, and perimeter modes.



### Web-Based Live Viewer

Users can login anytime anywhere via Internet Explorer and can login via four different user groups: administrator, power user, user, and guest.



### Compatible with CMS

Ultimate central monitoring solution for grand scale projects and projects with multiple sites.



### Multi-Platform Mobile Clients

iPhone, iPad, Android



### Intelligent Search

Search recorded video for 5 events including general motion, foreign object, missing object, loss focus and camera occlusion.



### RAID 0,1,5,10

Support RAID 0,1,5 and 10 for maximum capacity or data protection.



### PTZ Control

Software enables digital PTZ function. Physical PTZ control and preset/go functions are also available.



### 128CH Remote Live View

Monitor multiple NUUO servers (NVR, DVR, NDVR and NVRmini 2) simultaneously in one single interface.



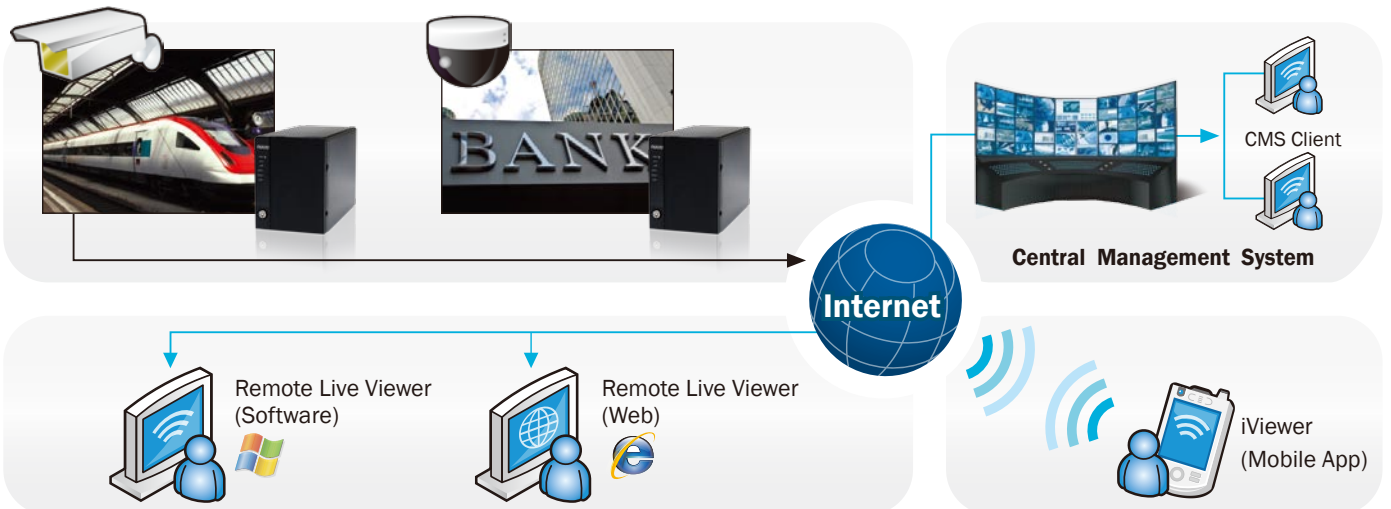
### Email Alert

Notify users on camera and system event through sound, digital output, Email and NUUO CMS alert.





### Point of Sale (POS)

All recorded POS transactions are searchable in the NVRmini 2 database.





# Specification

Model	NVRmini 2			
Product Image	 <b>2-bay Tower</b>		 <b>4-bay Tower</b>	
Part Number	NE- 2020	NE- 2040	NE-4080	NE-4160
Recording Camera	1-2	1-4	1-8	1-16
Number of Drives	2xSATA II		4xSATA II	
Available Drive Bays (US only)	1, 2, 6TB		1, 4, 8, 12TB	
RAID Level	RAID 0,1		RAID 0, 1, 5, 10	
I/O Interface	2xUSB 2.0 (for UPS)		2xUSB 2.0 (for UPS), 1xeSATA (for DAS)	
LAN Port (s)	1xGigabit RJ-45 ethernet port		2xGigabit RJ-45 ethernet ports	
Temperature	Operating : 0°C ~ 40°C			
Humidity	Operating : 5% ~ 95%			
Compression Format	MPEG4, M-JPEG, H264, MxPEG (Depends on IP camera)			
Recording Performance	Camera dependent Total bitrate: 40Mbps (Around 60fps at 1.3M)	Camera dependent Total bitrate: 40Mbps (Around 120fps at 1.3M)	Camera dependent Total bitrate: 80Mbps (Around 240fps at 1.3M)	
Remote PC CPU	Intel Core 2 Duo, 2.6 GHz			
Remote PC RAM	1 GB			
User Interface	HTTP web browser - Internet Explorer 8 and later/ NUUO client application program			
Recording Type	Continuous record, record by schedule, manual record, event trigger record, digital input trigger record			
Remote Live View Control	Live view, preset/ go, PTZ, remote I/O, snapshot, multi-view, digital PTZ, advanced E-Map, bandwidth monitoring			
Audio & Video Recording	Audio & video recording in synchronization			
POS	Live view, record, playback, and search for every transaction			
Auto Backup	Automatically backup the recorded video of the previous date to FTP			
Smart Search	General motion, missing object, foreign object, lose focus, camera occlusion			
Remote Client OS Platform	Windows XP (32-bit) / Windows 7 (32 and 64-bit)			
Remote Live View Connections	Live view maximum 64 connections at the same time			
Mobile Client OS Platform	iPhone, iPad, Android			
IP Camera Brand Support	ACTi, Alphatech, ArecontVision, ARM, Axis, Basler, Brickcom, Bosch, Bullwerk, Centrix, Cisco, CNB, COP, CORUM, Dahua, D-Link, Dynacolor, Digital Watch Dog, Eneo, Everfocus, Fine, Forenix, GE, Grandstream, Grundig, HIKVision, Honeywell, IQinVision, LevelOne, Lumenera, Linksys, Mobotix, Onvif, Panasonic, Pelco, Probe, PIXORD, Rover, Samsung, Santec, SANYO, Sunell, StarDot, Sony, Telview, Toshiba, Truen, UDP, Videosec, VIVOTEK, Vista, Zavio, 3Svision			

Part Number	Remark
NE-2020-AU	NE-2020 with AU cable
NE-2020-EU	NE-2020 with EU cable
NE-2020-JP	NE-2020 with JP cable
NE-2020-UK	NE-2020 with UK cable
NE-2020-US	NE-2020 with US cable
NE-2040-AU	NE-2040 with AU cable
NE-2040-EU	NE-2040 with EU cable
NE-2040-JP	NE-2040 with JP cable
NE-2040-UK	NE-2040 with UK cable
NE-2040-US	NE-2040 with US cable
NE-4080-AU	NE-4080 with AU cable
NE-4080-EU	NE-4080 with EU cable
NE-4080-JP	NE-4080 with JP cable
NE-4080-UK	NE-4080 with UK cable
NE-4080-US	NE-4080 with US cable
NE-4160-AU	NE-4160 with AU cable
NE-4160-EU	NE-4160 with EU cable
NE-4160-JP	NE-4160 with JP cable
NE-4160-UK	NE-4160 with UK cable
NE-4160-US	NE-4160 with US cable

## Support 56 brands of IP cameras and 1392 models



### About NUUO

NUUO is the world's leading provider of open platform video management solutions. Combining IP and analog technologies with IVS detections, NUUO guarantees a comprehensive security and surveillance solution to meet your high standard demands. Simple to install and manage, with customer-proven reliability, a high compatibility for 3rd party system integration and a wide range of IP camera support solutions in more than 20,000 worldwide installations, NUUO is dedicated to providing a flexible, user-friendly surveillance solution for large-scale and high-level enterprise projects as well as for small-and-medium business.