

MEITRACK Camera User Guide



Applicable Model: MVT600/T1/T3

Change History

File Name	MEITRACK Camera User Guide	Creator	Evan Lee
Project	MVT600/T1/T3	Creation Date	2012-07-06
		Update Date	2013-06-26
Sub Project	Accessories User Manual	Page	8
Version	V1.4	Confidential	External Documentation

Contents

1 Copyright and Disclaimer.....	- 4 -
2 Application.....	- 4 -
3 Product Function and Specifications	- 4 -
3.1 Product Function	- 4 -
3.2 Specifications.....	- 4 -
4 Main Device and Accessories	- 4 -
5 Outward Appearance.....	- 5 -
6 First Use	- 5 -
6.1 Physical Installation	- 5 -
6.2 Connection Terminal	- 5 -
7 Feature	- 6 -
7.1 Setting Photographed Events	- 6 -
7.2 Instruction of Snapshot	- 7 -
8 Note.....	- 8 -

1 Copyright and Disclaimer

Copyright © 2014 MEITRACK. All rights reserved.

MEITRACK and  are trademarks that belong to Meitrack Group.

The user manual may be changed without prior notification.

This user manual, or any part thereof, may not be reproduced for any purpose whatsoever without the written authorization of Meiligao (MEITRACK), or transmitted in any form, either electronically or mechanically, including photocopying and recording.

In no event shall Meiligao (MEITRACK) be liable for direct, indirect, special, incidental, or consequential damages (including but not limited to economic loss, personal injury, and loss of asset and property) arising out of the use or inability or illegality to use the product or documentation.

2 Application

RS232 interface terminal

For picture-taking

3 Product Function and Specifications

3.1 Product Function

- To output JPG format photos
- Remote photographs
- RS232 universal interface

3.2 Specifications

Item	Description
Dimension	62 x 51 x 51mm
Weight	200g
Normal Standby Power Consumption	25mA
Operating Temperature	-20℃~55℃
Operating Humidity	5%~95%
Operating Voltage	5V
Internal Resistance	3.6R
Pixels	30 W
Baud Rate	115200bps

4 Main Device and Accessories

- Camera
- 2G TF Card
- 4P to 8P Cable

5 Outward Appearance



6 First Use

6.1 Physical Installation

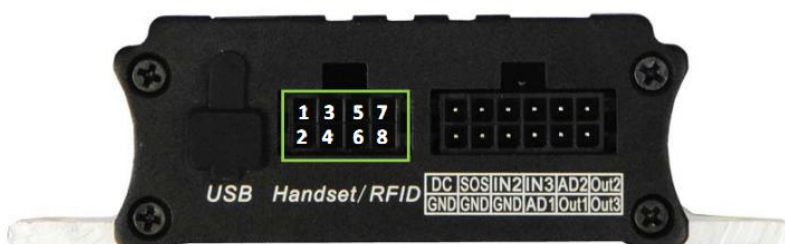
Camera and Vehicle: according to customers' need to install.

6.2 Connection Terminal

1. Insert the camera interface into tracker's dedicated interface
MVT600 dedicated interface is as follows:



2. T1 dedicated interface is as follows:

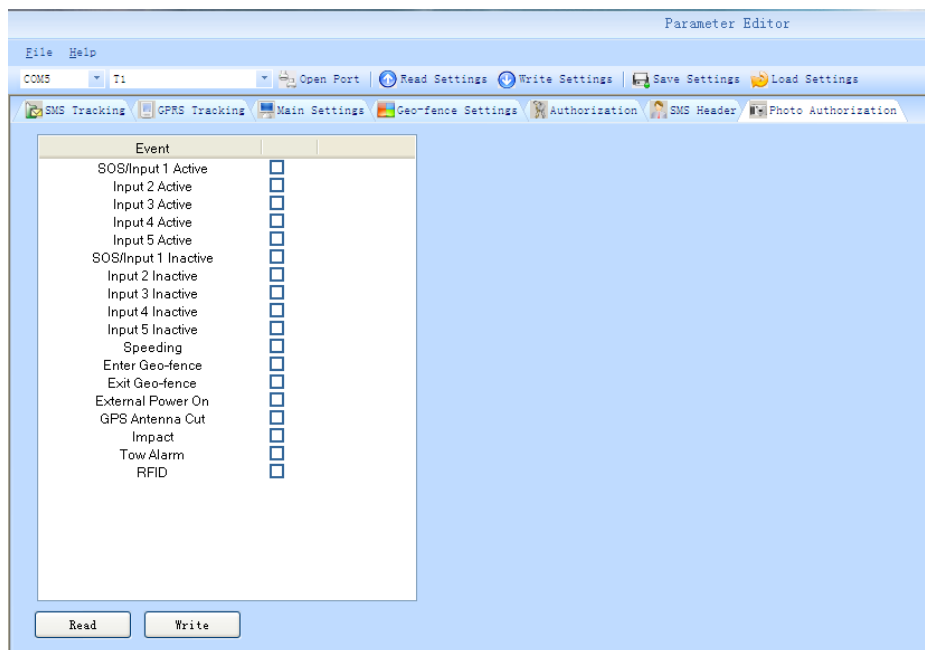




7 Feature

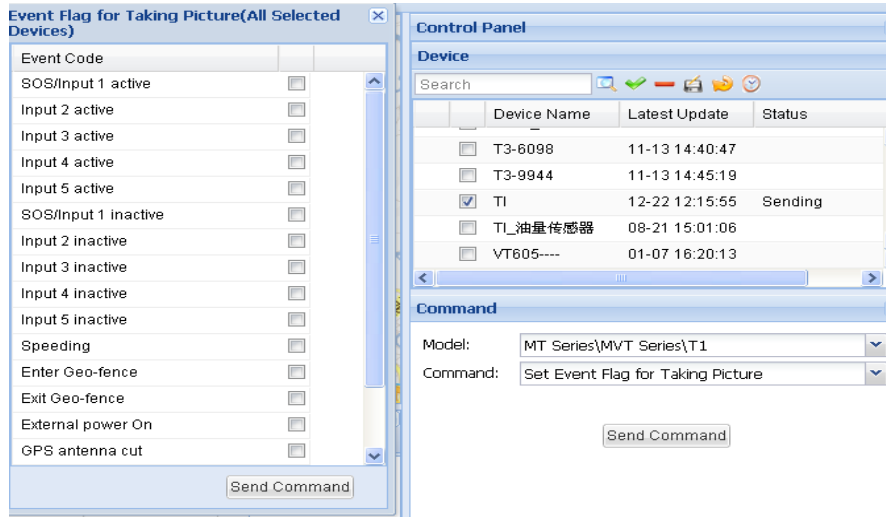
7.1 Setting Photographed Events

1. Connect to MEITRACK Parameter Editor to view and set the photographed event.



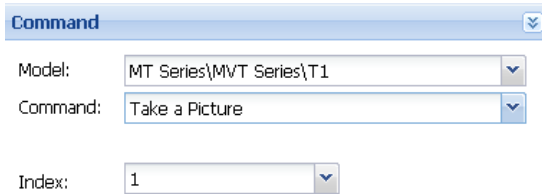
2. It is able to connect the platform, and commands will be sent through the platform for setting photographed events, trigger the event will be able to take pictures.

When photographing events, the camera will shoot a photo storage TF card. View photos as needed in the platform, issued command through the platform under the instruction: "Get photos name", and that is able to get photos.



7.2 Instruction of Snapshot

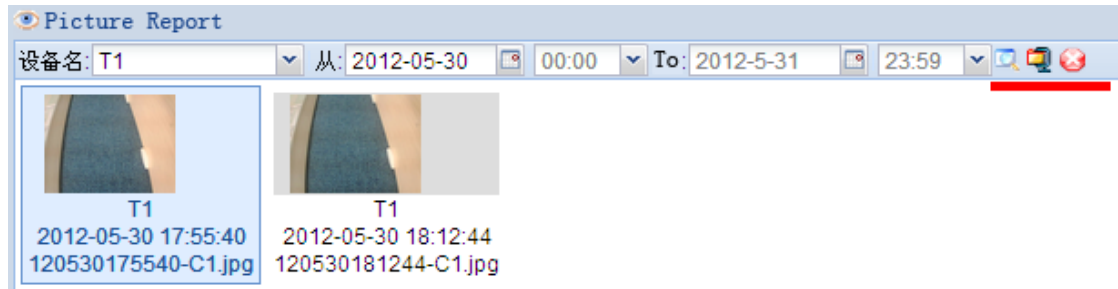
1. Device connect to the platform, select the command "Snapshot", " NO.1" to send a snapshot command, the device will be uploaded to the platform to take a photo.



Send Command



2. Through the query statements →photos statement, select the device, based on the date you can view, download and delete upload photos to the server.



8 Note

1. Please confirm the TF card format FAT32.
2. Please confirm MVT600 is connected to an external power supply.
3. Please make sure the SIM card is GPRS data can be uploaded.
4. Please make sure that the T1 cable is properly connected to cable.

Please do not hesitate to email us at info@meitrack.com if you have any questions.