

# epcom®

## HD-TVI AHD CVI MINI PTZ CAMERA

Quick installation guide  
V1.01

### Warranty card

Product name: \_\_\_\_\_ Purchasing Date: \_\_\_\_\_  
 series: \_\_\_\_\_ User: \_\_\_\_\_  
 Address: \_\_\_\_\_ Contact: \_\_\_\_\_  
 Tel: \_\_\_\_\_ Postal Code: \_\_\_\_\_  
 Dealer: \_\_\_\_\_ Fax: \_\_\_\_\_

Thank you for purchasing our product. This is the warranty card for free filing.

Expiry Date: \_\_\_\_\_

#### Contents:

This warranty card applies for all company products.

1. Before the expired date, please feel free to contact with us if there is any breakdown in quality about the product.

2. After purchasing, please send back the warranty card with all contents filled to our company or its dealer or face in time, and your product can be maintained or repaired for free. Otherwise, we refuse to deal with it.

3. Please fill this warranty card carefully since we will use the information written on it.

4. You have to pay for the filing if it is in these circumstances:

- Device damages caused by individuals
- Device damages caused by using inadequate environment
- Device damages caused by irresistible force
- No warranty card
- Pass the expired date.



### Preface

#### Summary :

This document describes unpacking inspection, device structures, installation, and quick configuration tool in details.

#### Signal instruction :

These symbols may appear with meanings as following:

SIGNAL	INSTRUCTION
	High potential damage. If unavoidable, it will harm users with high damages.
	Intermediate or low potential damage. If unavoidable, it will harm users with low damages.
	Potential damage. If neglected, it may cause damage on device, data loss, system performance, or irreversible results.
	Sensitive device for static.
	High voltage.
	High laser radiation.
	Helps for solving problems or saving your time.
	Data information for the contents.

### Important Safety Notices

The following contents are specification for using the devices correctly. Please read these notices and warnings carefully and obey while using it.

#### ⚠ Attention:

##### 1.1 Power

- All installation and operation here should conform to your local electrical safety codes. The power should conform to the requirement in the SELV (Safety Extra Low Voltage) and the Limited Power Source rated 12V DC or 24V AC in the IEC60950-1. (Refer to general introduction)
- Please install the proper power cut-off device during the installation connection.
- Before running the camera, please confirm the power installed correctly.
- Please protect power cable being trampled or squeezed, especially in the socket, and exit junction.

##### 1.2 Environment

- Avoid focusing on highlight (such as the sun or lights), otherwise it may cause over-exposure phenomenon (this is not device's problem) or may damage camera's CCD (or CMOS).
- Please transport, use and store the camera under allowable temperature and humidity range. Do not put the device under wet, dusty, extremely hot or cold, strong electromagnetic radiation or unstable lighting conditions etc.
- Prevent water or other liquid falling into the camera.
- Please keep the ventilation around the device.
- No heavy stress, violent vibration or water splash are allowed during the transportation and storage.
- When transporting the camera, it should use camera packing or use same quality material packing.
- Thunder-proof device is recommended to be adopted for preventing thunder better.

##### 1.3 Operation and Maintenance

- Do not dismantle the camera since no components inside which can be repaired by users.
- Do not touch the CCD [CMOS] optic component directly; you can use the blower to clean the dust on the lens' surface. If necessary, please gently clean the dust with dry cloth which is slightly wet with alcohol.
- Please use wet cloth to clean the device. For heavy dirt, please put little detergent on the cloth to clean and dry. Do not use volatile solvent, such as Alcohol, Benzene or Diluents, or Irritant and abrasiveness cleanser to clean the device. Otherwise, it will damage the device or weaken camera working performance.
- The material of front cover is optic component, please do not touch or clean the surface directly. For cleaning, please use professional optical cleaning method. Inappropriate cleaning method (e.g. cleaning directly with cloth) may result in a harmful effect on the infrared function of the camera.

#### ⚠ Warning :

- Be sure to use all the accessories recommended by manufacturer and the installation and repairs should be conducted by professionals.
- Please make sure the CCD (or CMOS) component is out of the radiation of laser beam devices. Otherwise it may result in damage on the component.

### Special explanation

- Because our company continuously adopts new technologies, product parameters change without prior notice. Some function of products may have slight difference after the updates.
- For receiving the latest procedures and additional instruction document, please contact the company's customer service department.
- If there are any problems while using the camera, please feel free to contact the supplier or the company's customer service department.
- Because of the real environment and other unstable factors, some data may be different with instruction guide. If there are any questions and disputes, please regard the company's final explanation as the criterion.
- Please follow instruction guide, we are not liable for any problems caused by man-made damage.
- This manual is for reference only. Slight difference may be found in users' interface.

### Checking Box

#### 1.1 Checking Steps

When you received the bullet PTZ Camera, please check whether it has obviously damage on the appearance of equipment. Packing material can stand accidental Crash on transport. Please open the package and check all the components are included. Please reference the following form.

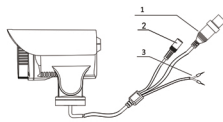
#### 1.2 Accessories

Be sure to use all the accessories recommended by manufacturer.

Sheet 1-1 Accessory

ACCESSORY	SPECIFICATION	QUANTITY
CAMERA	PIECE	1
MENU	PIECE	1

## 2 Structure



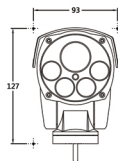
Picture 2-1 Cable

Sheet 1-2 Cable Function Instruction

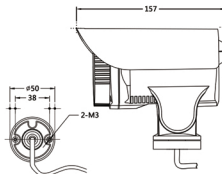
SN	Interface	Description
1	Video	AHD CVI TVI High Definition Video
2	Power	Power, 12V/2A DC
3	485	485 controller, Orange 485A, Yellow 485B

#### 2.2 Structure size

(Unit: mm)



Picture 2-2 Dimension

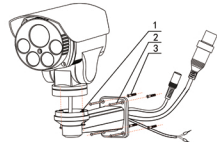


Picture 2-3 Dimension

#### 2.1 Multiple-Function Combination Cable

You can refer to the following figure for multiple-function combination cable information. See Figure 2-1. There might be some differences among different serial products.

## 3 Device Installation



Picture 3-1 Device installation

This camera can be installed on the wall, please refer to the following steps:  
The installation wall should maintain at least triple weight as bracket and camera's.

#### Step 1: Install bracket of camera

For cement wall:

1. Installation expansion bolts (Insert the expansion bolt into the bracket holes)
2. Put network cable through bracket inverter.
3. Use the cross-head screwdriver to fix the adjust screw firmly.  
For woodness surface, do not need to install expansion bolt, use cross-head screwdriver fix firmly.

#### Step 2: Install camera

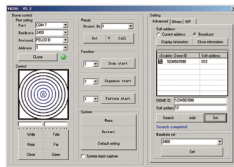
Insert the expansion bolt into the installation holes. Take the screws from the accessories bag and then use them to secure the device on the installation surface of the wall or the ceiling.

Step3: Use the cross-head screwdriver to fix the adjust screw, confirm camera firmly.

Step 4: Use the keyboard or DVR to control the camera and adjust the location.

#### Warnings:

Please do not adjust camera's structure manually which will damage the device.  
After installation, please take care of the waterproof of the device. Ensure water cannot go along the extension line to the camera.



Picture 4-2

Note: If 485 cable only connect one PTZ camera, it's consent for user setting, user could input 000000000 in "Demo ID" box.

#### 4.3 Settings through PTZ Configuration Tool

PTZ camera configuration tool is a picture shows, PTZ camera connect to computer by 485 switch card, in address and baudrate edit box, user input address and baudrate of camera which user need to set, click "Set".



Picture 4-3

## 4 Settings for Camera

### 4.1 Setting methods for Camera

The PTZ camera supports two kinds of control method—485 and UIC, if adopt 485 control mode, user need to set address and bitrate of camera.

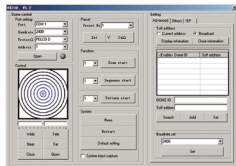
For 485 control mode, the control agreement is self-adjusting, but address and bit rates need to be adjusted by users. The default address is 1 and the default bit rate is 2400. Its setting method is different from the one of traditional dial-number switch, PTZ camera don't support dial number switch, and users can set the camera with following steps:

1. VIK200 Control Software
2. Menu on network
3. Specific preset commands.

### 4.2 Settings with VIK200 PTZ Control Software

VIK200 is a PTZ camera controlling software which works on the computer with WINDOWS system. Through 485 switch-card for connecting computers and cameras, users can control the camera, adjust addresses and bit rates conveniently.

The interface of the software is shown below, see picture 4-1



Picture 4-1

1. Charging the PTZ camera, address and baudrate setting of VIK200 controlling software's is in accord with the one of PTZ camera, user will setting firstly, user control PTZ camera by VIK200 to make sure camera could work regularly.

2. Click "Search", ID and address of PTZ camera which connects to 485 cable will show in the list, click the ID number in the list, corresponding ID and address will show in the visible box, modify the address, then click "add", the modified address will be updated in the list, click "set", the address will be modified, if setting is successful, PTZ camera will rotate in vertical direction, it indicate setting successfully.

### 4.4 Setting through Preset Compound Commands.

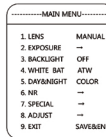
1. Connect PTZ camera with controlling device such as keyboards or DVR and adjust corresponding address and bit rate. Make sure users can control the device normally.

2. Setting through preset command, specific method is as follows:

Caution: After setting, if the format of the video is not matching with the one in DVR or other devices, images may not be shown on the screen.

Function	command	explain
Address	Set85 Call 60 Call: n	n: PTZ camera address
Baud rate	Set85 Call 61 Call: n	n: 1:2400 2:4800 3:9600
Video	Set85 Call 62 Call: n	n: 1: AHD_PAL 2: AHD_NTSC 3: TVL_PAL 4: TVL_NTSC 5: CVI_PAL 6: CVI_NTSC 7: CVBS_PAL 8: CVBS_NTSC
Guard Function	Set85 Call 75 Call: n	n: 1:Close guard Function 2:Preset 1
Guard Function Time	Set85 Call 76 Call: n	n: 1-60
IR mode	Set85 Call 70 Call: n	n: 1: automatically 2:open 3:close
IR Near Power	Set85 Call 71 Call: n	n: 1-10
IR Far Power	Set85 Call 72 Call: n	n: 1-10
IR Sensibility	Set85 Call 73 Call: n	n: 1-10 the smaller the value, the lower the illumination value
Open Menu	Call 95	

Call 95, you can setup the image effect of the camera, as shown below:



Note:

1. If the video format after setting could not match display device or DVR, it may lead to image showing unsuccessfully.
2. Sequence default includes preset 1-preset 10, parking time is 10sec.

### Toxic or Hazardous Materials or Elements

Component Name	Toxic or Hazardous Materials or Elements					
	Pb	Hg	Cd	Cr VI	PBB	PBDE
OSD/Invert assemble	○	○	○	○	○	○
Housing	○	○	○	○	○	○
Connection Cable	○	○	○	○	○	○
Packaging components	○	○	○	○	○	○
Accessories	○	○	○	○	○	○

○: Indicate that the concentration of the hazardous substance in all homogeneous materials in the parts is below the relevant threshold of the SJ/T11363-2005 standard.

×: Indicate that the concentration of the hazardous substance of at least one of all homogeneous materials in the parts is over the relevant threshold of the SJ/T11363-2005 standard. In the usage period, if users use this product correctly, these materials will not be harmful to users and their possession. Users are not allowed to deal with these materials or components. Please recycle these materials to corresponding departments ruled by laws.