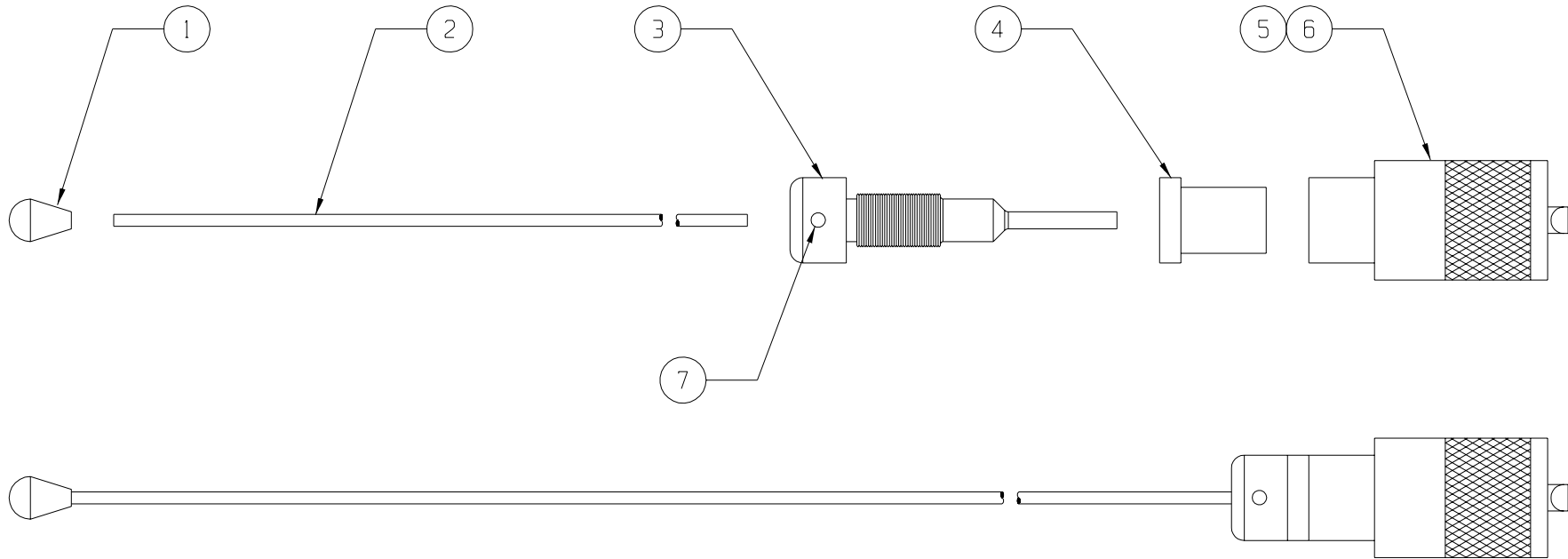



THIS DRAWING CONTAINS INFORMATION PROPRIETARY TO LARSEN ELECTRONICS, AND IS INTENDED FOR DISTRIBUTION ONLY TO PERSONS OR ORGANIZATIONS HAVING A LEGITIMATE NEED FOR THE DRAWING. WHEN DISTRIBUTED OUTSIDE LARSEN ELECTRONICS, THIS DRAWING IS SUPPLIED FOR INFORMATION, IDENTIFICATION, ENGINEERING, EVALUATION AND/OR INSPECTION PURPOSES ONLY, AND MAY NOT BE USED AS A BASIS FOR THE MANUFACTURE OR SALE OF PRODUCTS TO LARSEN ELECTRONICS OR TO ANY THIRD PARTY UNLESS AUTHORIZED IN WRITING BY LARSEN ELECTRONICS. THIS DRAWING IS PROTECTED UNDER THE COPYRIGHT LAW AS AN UNPUBLISHED WORK, AND MAY NOT BE PUBLISHED, COPIED OR REPRODUCED BY PERSONS OUTSIDE LARSEN ELECTRONICS WITHOUT EXPRESS WRITTEN PERMISSION.

LET	REV	DESCRIPTION OF CHANGE	CHK BY	DATE
	000	RELEASED FOR PRODUCTION	CE	08-09-96
	001	CHANGED BALL FROM 5111.0002 TO 5103.8099	CE	07-22-96



		LARSEN ELECTRONICS, INC. 3611 N.E. 112th AVE. VANCOUVER, WA 98682			
		UNLESS NOTED DIMENSIONS ARE IN INCHES WITH TOLERANCES AS PER ANSI Y14.5M-1982			
OWN	C EMERICK	08-09-96	(2) DECIMAL	(3) DECIMAL	ANGULAR
ENGR	A WELLS	04-12-92	±.03	±.005	± 2°
CHKR	A WELLS	08-20-96	FIRST USED ON		
PRDD	L PETERSON	08-20-96	FIRST USED ON		
MATERIAL					
SEE ENCLOSED MATERIAL LIST					
FINISH					
TITLE					
1/4 WAVE ANT TO FIT SO 239 MNT					
SCALE	SIZE	PART #	SHEET #		
1:1	A	PQ	1 OF 1		

DO NOT SCALE DRAWING

DRAWING # 469761