

SuperAimer CA78

AM System | RF System | EM System

CA78 AM-EAS system combines convenience of antennas with built-in electronics and excellent detection of system with separate controller and antennas. With CA78, most of protection in retail stores can be realized with minimum installation and service cost.



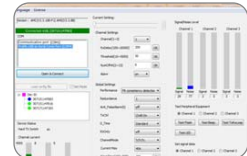
- All electronics are built inside the base of antennas. No separate controller is needed.
- Convenient for use in any store environment. Saving tremendous installation cost.
- Excellent detection performance at much lower system cost.
- Strong noise immunity improves systems' performance in complicated electromagnetic environment.
- Tuned with powerful configuration software (AMC) by laptop. No extra tool is required.
- Synchronization is simply done by clicking the mouse.
- All networked systems can be tuned from any one of the systems.
- Electronics are separated into different functional modules. Convenient for service.
- Open frame design makes antennas to be elegant and transparent.
- ABS frame with optional clear acrylic plates for promotional purpose.



Audial and visual alarm indication



Compact ABS base with built-in electronics



AMC-Powerful configuration software



Checkout protection



Shop-in-shop protection



Entrance/exit protection



AM System | RF System | EM System

Product Codes & Description

CA78	Antenna Frame	Frame with antenna coils but without electronics
CA78LC	Master Antenna, incl. power cable	Transceiver system. Can work independently
CA78LS	Transceiver Slave Antenna, incl. cable kit	Transceiver antenna. Have to work with CA78LC
CA78LR	Receiver Slave Antenna, incl. cable kit	Receiver antenna only. Have to work with CA78LC

Detection Range

	CA78LC/CA78LS (both sides of antenna)	CA78LC & CA78LS (in between)	CA78LC/CA78LS & CA78LR (in between)
AM label	0.8m	1.6m	1.4m
Hard tag (33mm ferrite)	1.1m	2.2m	1.8m

- Detection range varies depending on quality of power source, level of noise, quality of tags and labels and tuning skill.

Specifications

Central frequency	58KHz
Power consumption (peak)	220W
Fuse of PSU	3.15A/5.0A
Current (max.)	3.15A@230VAC, 5.0A@120VAC
Height	1548mm (61")
Width	405mm (16")
Thickness of frame	45mm (1.8")
Thickness at base	130mm (5")
Weight	15kg (33lb)

