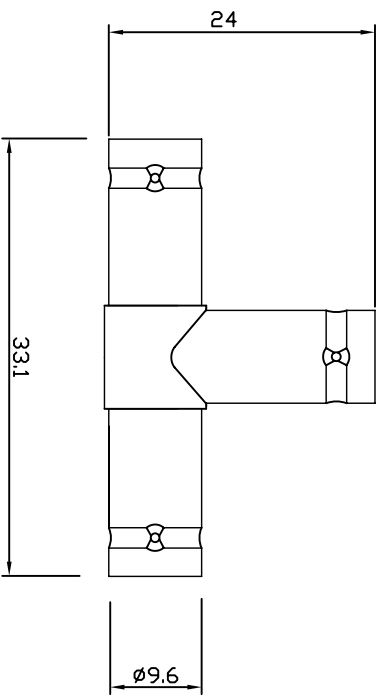


Version	Explain	Date
A		2014.12.09

■ MAJOR TECHNICAL CHARACTERISTICS

- Temperature Range  $-55^{\sim}+155^{\circ}\text{C}$  (PE Cable  $-40^{\sim}+85^{\circ}\text{C}$ )
- Impedance  $50\ \Omega$ ,  $75\ \Omega$
- Frequency Range DC $\sim$ 4GHz
- Working Voltage 500V r.m.s at sea level
- Withstanding Voltage 1500V r.m.s at sea level
- Contact Resistance
- Center Contact  $\leq 1.5\text{m}\ \Omega$
- Outer Contact  $\leq 1\text{m}\ \Omega$
- Insulation Resistance  $\geq 5000\text{M}\ \Omega$
- Center conductor retention force  $\geq 0.57\text{N}$
- Insertion Loss  $\leq 0.20\text{dB}/3\text{GHz}$
- Voltage Standing Wave Ratio
- Straight  $\leq 1.22/3\text{GHz}$
- Right angle  $\leq 1.30/3\text{GHz}$
- Durability (mating)  $\geq 500$ 次 (cycles)
- MATERIAL & PLATING
  - body brass nickel plated
  - pin contact brass gold or silver plated
  - socket contact beryllium-copper gold or silver plated
  - resilient contact beryllium-copper gold or silver plated
  - insulator PTFE
  - crimp ferrule copper alloy nickel plated
  - O-ring sealing 6146 silicone rubber



general tolerance	CUSTOMER:	CUST NO:	PART NO:	
X	F01	PRODUCT NO:	TT-RG10	
X:X	F005	Triple BNC		
X:XX	F0005			
X:XXX	F00002	DRAWN BY	DRAWING SIZE	1:1 A1
		CHECKED BY	UNIT	mm
		APPROVED BY	PAGE	1 OF 1
		SORTING NO.		

