

Electrical Data

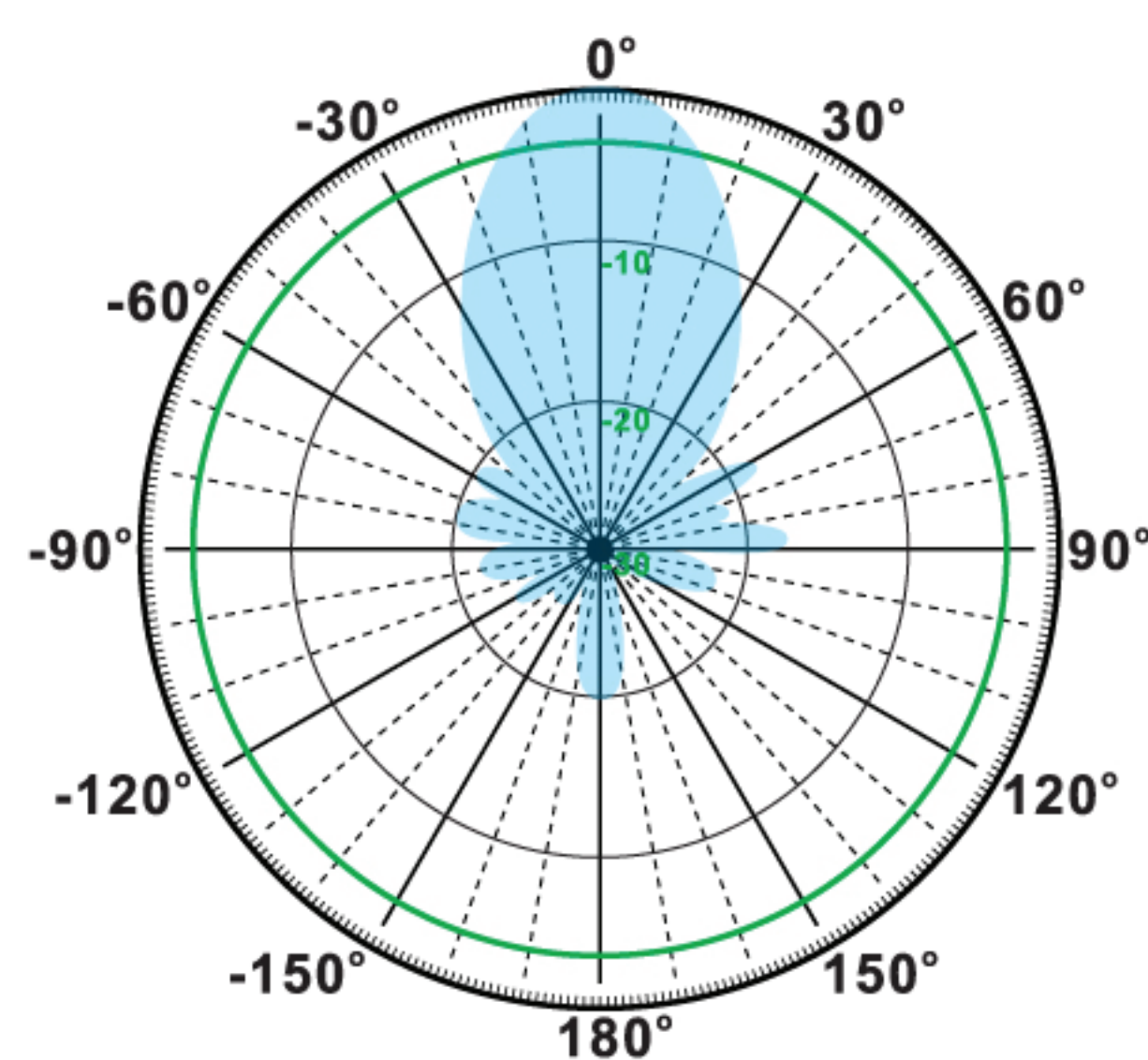
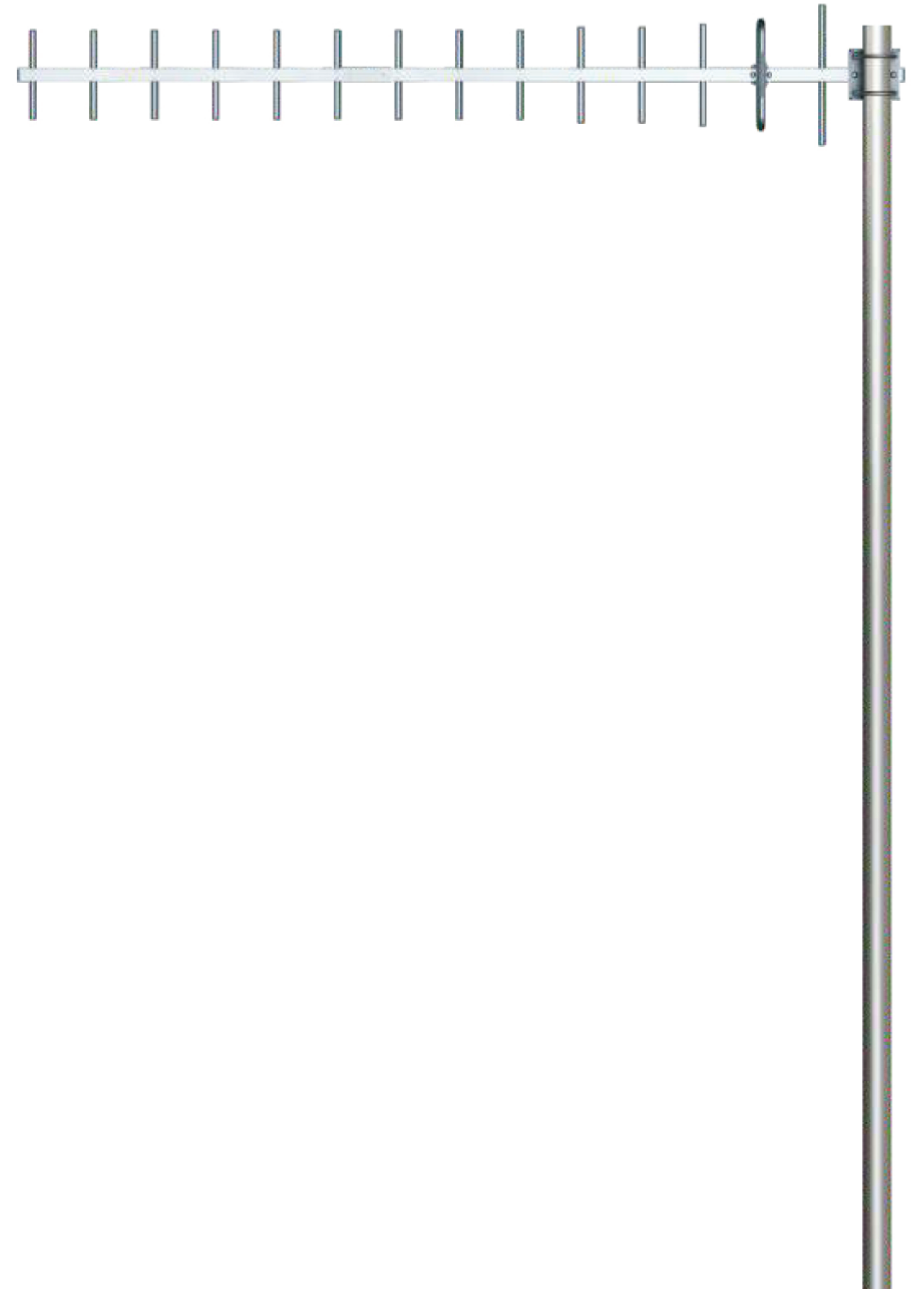
Frequency:	824-896 MHz
Gain:	16 dBi
VSWR:	<1.5:1
Polarization:	Horizontal Or Vertical
Horizontal Beamwidth :	28°
Vertical Beamwidth:	25°
Nominal Impedance:	50 Ohms
F/B Ratio:	>20 dB
Max Input Power:	100 W
Lightning Protection:	DC Ground

Mechanical Data

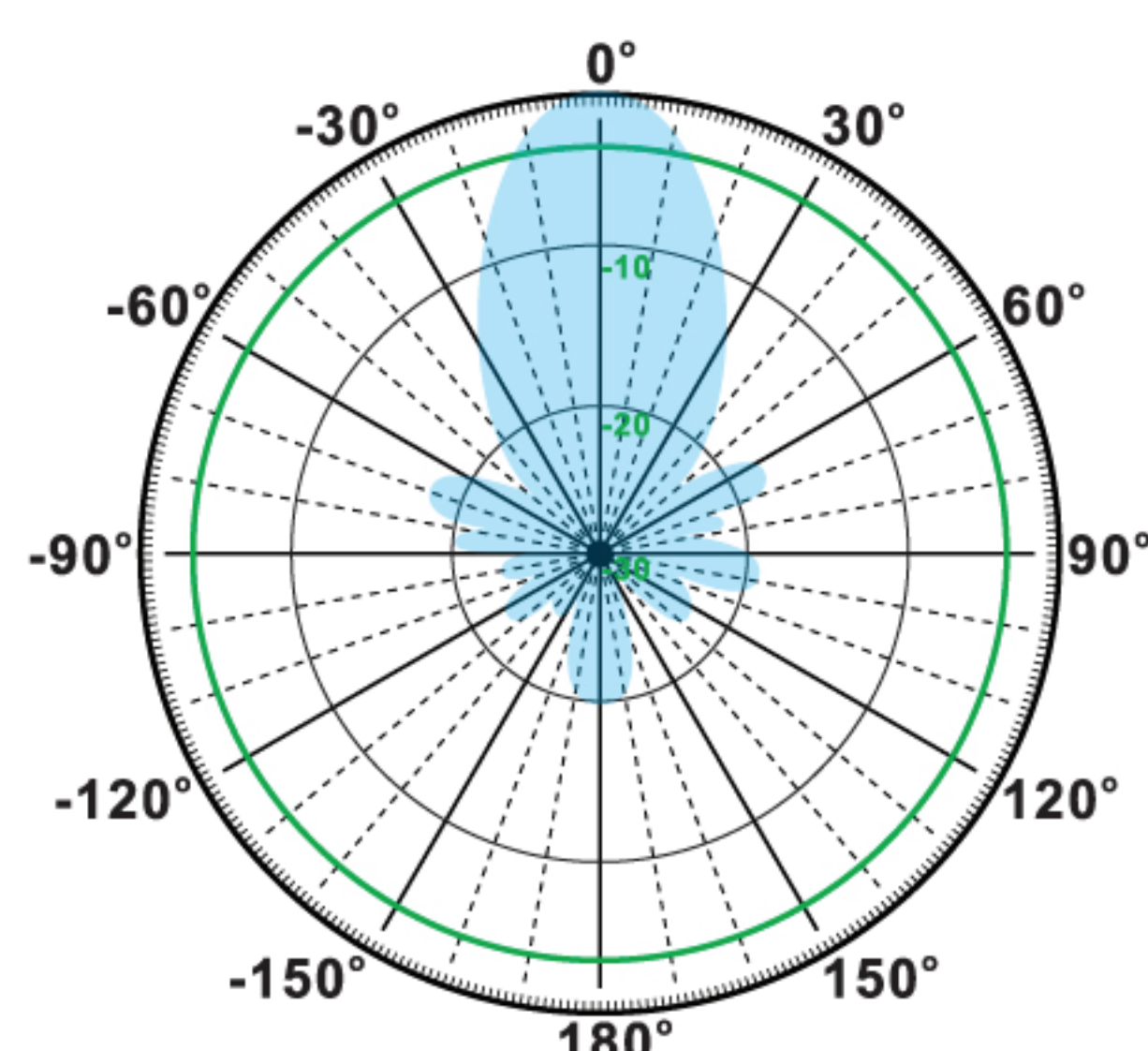
Connector :	N Female
Dimension:	1510mm/59.45in
Weight:	0.6kg/1.32lb
Cable Length:	360mm/14.17in
Reflector Material:	Aluminum Alloy
Antenna Material:	Mast
Mast Size:	Ø40-Ø60mm
Rated Wind Velocity:	210km/h
Operating temperature:	-40~+65°C

Shipment Data

Packing Qty:	10pcs/Carton
Carton Size:	980*440*365mm
(length*width*height)	38.6*17.3*14.4in
Packing Weight:	8.2kg/18.06lb



H-Plane



V-Plane

