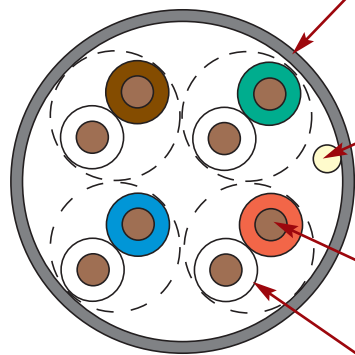
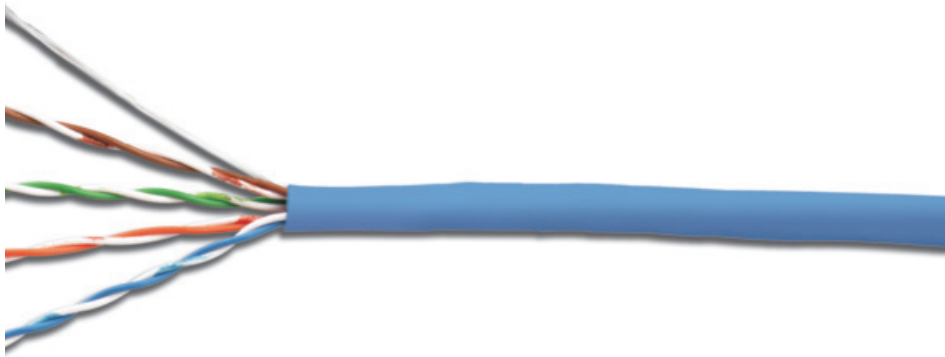




## Solution 6™ UTP Cable (North America)

Solution 6 cable meets or exceeds all ANSI/TIA and ISO/IEC category 6 transmission performance specifications. Combine our high performance category 6 connectivity with Solution 6 cable and the result is a system with excellent electrical performance for optimum applications support.

The Solution 6 Plenum cable design eliminates the central isolation member common to many category 6 UTP cables, reducing overall cable diameter. This reduces pathway size requirements, carton materials and provides more efficient shipping options for a greener installation.



### Jacket

- Nominal Cable O.D.:  
CMP— 0.192 in.
- Jacket Material:  
CMP— FRPVC

### Rip Cord

- Applied longitudinally under cable jacket

### Conductor

- 0.57mm (0.022 in.) 23AWG solid bare copper

### Insulation

- Conductor Insulation:  
CMP— FEP

### HIGHLIGHTS

- Reverse sequential numbering
- Round jacket
- Jacket material is lead free

### PACKAGING

- 1000 ft. reelex
- Weight — 26 lbs/1000 ft.

### STANDARDS COMPLIANCE

- ISO/IEC 11801:Ed. 2.2 (Category 6)
- ANSI/TIA-568-C.2
- UL CMP and CSA FT6
- RoHS Compliant

### ETHERNET APPLICATIONS SUPPORT

- 1000BASE-T
- 100BASE-T
- 10BASE-T

*Supports any application designed for category 6 or lower cabling*





# Product Information

## ELECTRICAL SPECIFICATIONS

DC Resistance	<9.38Ω/100m
DC Resistance Unbalance	5%
Mutual Capacitance	5.6 nF/100m
Capacitance Unbalance	<330 pF/100m
Characteristic Impedance (ohms)	1-100 MHz: 100 ± 15% 100-520 MHz: 100 ± 22%
NVP	CMP-70%
LCL	30-10 log(f/100) dB
Delay Screw	≤45ns

## PHYSICAL PROPERTIES

	CMP
Pulling Tension (max)	110N (25 lbf)
Bend Radius (min)	25mm (1 in.)
Installation Temperature	0 to 60°C (+32 to 140°F)
Storage Temperature	-20 to 75°C (-4 to 167°F)
Operating Temperature	-20 to 60°C (-4 to 140°F)

### Part # Description

9C6P4-E2-(XX)-RXA .....Plenum (CMP, CSA FT6) 305m (1000 ft.) Reelx

Use (XX) to specify jacket color:

01 = black, 02 = white, 03 = red, 04 = gray, 05 = yellow, 06 = blue, 07 = green,  
08 = violet, 09 = orange

## TRANSMISSION PERFORMANCE

GUARANTEED WORST CASE  SIEMON TYPICAL

Frequency (MHz)	Insertion Loss (dB)		NEXT (dB)		PS NEXT (dB)		ACR-N (dB)		PS ACR-N (dB)		ACR-F (dB)		PS ACR-F (dB)		Return Loss (dB)		Propagation Delay (ns)	
1.0	2.0	1.8	74.3	98.8	72.3	96.3	72.3	97.1	70.3	94.6	67.8	88.8	64.8	86.2	20.0	27.1	570	493
4.0	3.8	3.5	65.3	85.4	63.3	83.6	61.3	81.8	59.5	80.1	55.8	77.4	52.8	75.3	23.0	35.2	552	491
10.0	6.0	5.6	59.3	75.6	57.3	74.3	53.3	70.0	51.3	68.7	47.8	71.0	44.8	67.8	25.0	34.2	545	487
16.0	7.6	7.1	56.2	74.9	54.2	73.8	48.7	67.8	46.7	66.6	43.7	66.6	40.7	64.3	25.0	34.1	543	485
20.0	8.5	8.0	54.8	71.4	52.8	69.3	46.3	63.4	44.3	61.3	41.8	65.4	38.8	62.2	25.0	37.6	542	485
31.25	10.7	10.0	51.9	70.8	49.9	68.6	41.2	60.8	39.2	58.6	37.9	62.7	34.9	58.7	23.6	35.0	540	484
62.5	15.4	14.4	47.4	62.7	45.4	62.3	32.0	48.3	30.0	47.9	31.9	55.4	28.9	52.5	21.5	27.6	539	482
100.0	19.8	18.5	44.3	58.7	42.3	58.4	24.5	40.2	22.5	39.8	27.8	50.6	24.8	47.9	20.1	27.4	538	482
160.0	25.6	24.0	41.2	62.1	39.2	59.2	15.6	38.1	13.6	35.2	23.7	46.7	20.7	43.5	18.7	25.7	537	481
200.0	29.0	27.0	39.8	54.6	37.8	54.2	10.8	27.6	8.8	27.2	21.8	44.4	18.8	41.4	18.0	22.2	537	481
250.0	32.8	30.5	38.3	53.0	36.3	52.1	5.5	22.5	3.5	21.6	19.8	41.7	16.8	39.7	17.3	25.3	536	481
300.0*	-	33.8	-	53.5	-	52.3	-	19.7	-	18.5	-	39.9	-	37.5	-	20.1	-	481
400.0*	-	39.9	-	49.9	-	49.0	-	10.1	-	9.2	-	34.1	-	33.0	-	18.2	-	481
500.0*	-	45.2	-	55.3	-	52.7	-	10.0	-	7.4	-	34.4	-	31.2	-	17.7	-	480
550.0*	-	48.2	-	46.2	-	44.5	-	-2.0	-	-3.8	-	33.1	-	30.2	-	19.6	-	480

\*Values for frequencies above industry requirements are for information only.

All performance based on 100 meters (328 ft.).

Because we continuously improve our products, Siemon reserves the right to change specifications and availability without prior notice.

**Worldwide Headquarters**  
**North America**  
 Watertown, CT USA  
 Phone (1) 860 945 4200

**Regional Headquarters**  
**Europe Russia Africa**  
 Chertsy, Surrey, England  
 Phone (44) 0 1932 571771

**Regional Headquarters**  
**China**  
 Shanghai, P.R. China  
 Phone (86) 215385 0303

**Regional Headquarters**  
**Latin America**  
 Bogota, Colombia  
 Phone (571) 657 1950/51/52

**Regional Headquarters**  
**India Middle East**  
 Dubai, United Arab Emirates  
 Phone (971) 4 3689743

**Regional Headquarters**  
**Asia Pacific**  
 Sydney, Australia  
 Phone (61) 2 8977 7500

**Siemon Interconnect Solutions**  
**Watertown, CT USA**  
 Phone (1) 860 945 4213 US  
 www.siemon.com/SIS

SS-Solution6CBL\_Plenum(US) Rev. C 5/18 (US)

© 2018 Siemon

